

UNIVERSAL GROUT PUMP SYSTEM



Weldgrip's Universal Grout System is a versatile grout mixing and pumping system, capable of mixing grouts through to mortars and is available as either air or electric driven.

The grout/mortar is mixed at a high rotary speed developed by the turbomixer providing excellent mixing over short periods. The mix is then fed by a helical screw feed to a positive displacement pump.

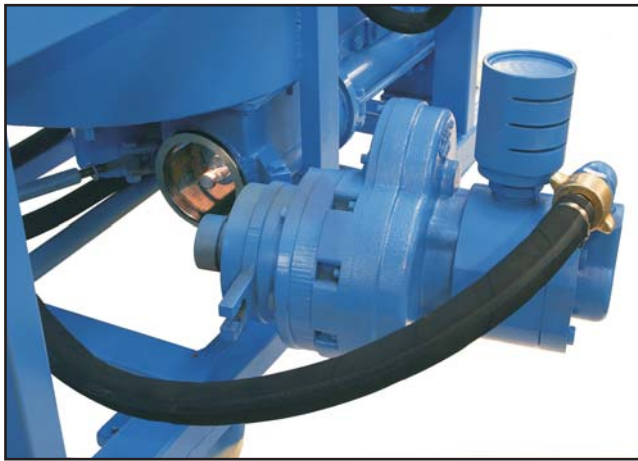
The system's stator is adjustable in order to combat wear, thereby extending the life and efficiency of the unit .

Housed in a heavy duty frame with integral lifting eyes and removable heavy duty wheels, the pump is designed for flexibility and manoeuvrability on site.

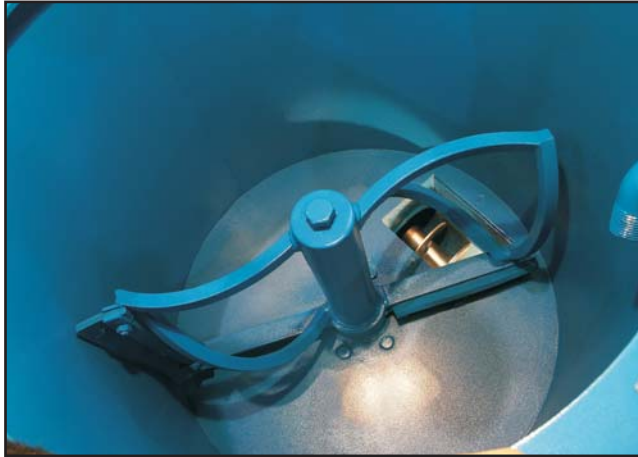
The grout system is complete with integral oiler, vibrating lid and safety interlock which stops the mixer paddles automatically when the lid is lifted during operation.

Designed for easy cleaning, the mixer system's screw feed is easily removed and cleaned by means of a hinged connection between the pump motor and screw.

Rates of mixing and pumping are controlled by varying the air supply to the system.



Pump motor swung away to allow easy access for cleaning the helical screw feed.



The mixer bin showing paddle and helical screw feed.



AM1000-1 THIXOTROPIC GROUT

Technical data

Pump Motor	7.4kW - 7.0m ³ /min air consumption
Pump Capacity	0.9 m ³ /h - 15 litres / min
Pump Output Pressure	40 bar
Pump Supply Pressure	6 bar
Mixer motor	2.6kW - 2.7 m ³ /min air consumption
Mixer Bin Capacity	60 litres



Safety interlock closed in operational position.



Safety interlock open, paddle operation disabled.



Unit 19, Redbrook Business Park, Wilthorpe Rd.,
Barnsley, South Yorkshire, S75 1JN.
Tel: +44 (0) 1226 280567 Fax: +44 (0) 1226 731563
E-mail: tech@weldgrip.com www.weldgrip.com



Technical Services: Tel: +44 (0) 1226 785553
Service Centre: Tel: +44 (0) 1226 771743